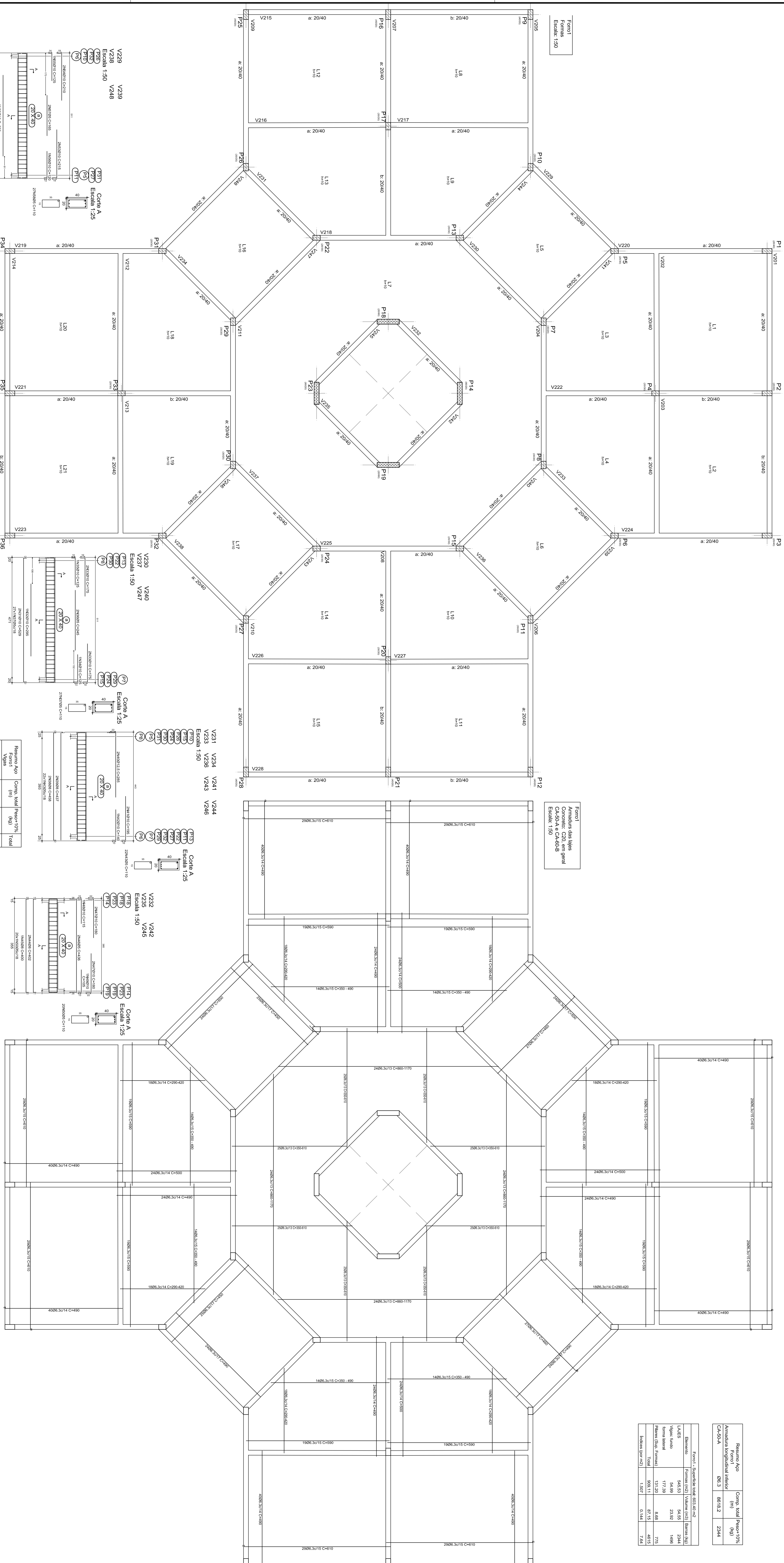
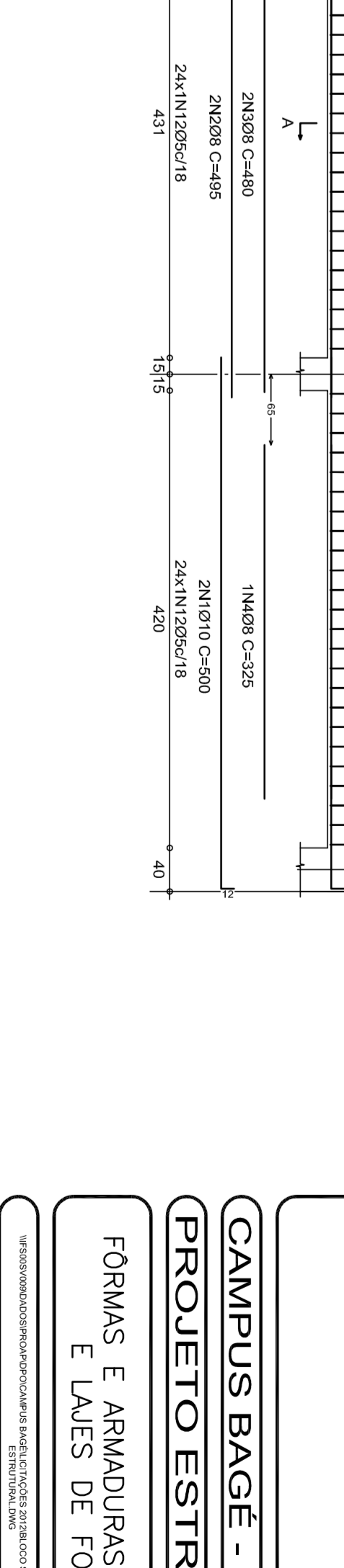
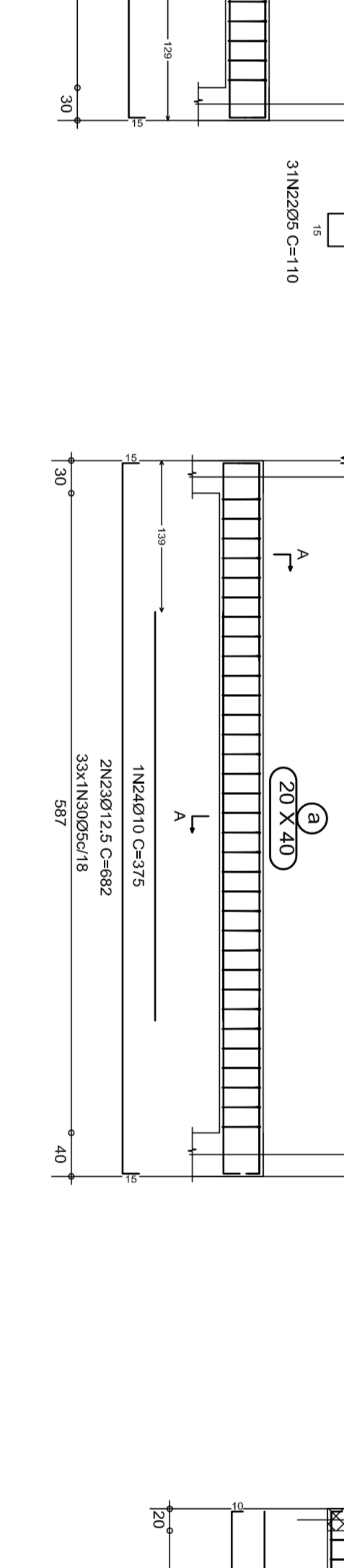
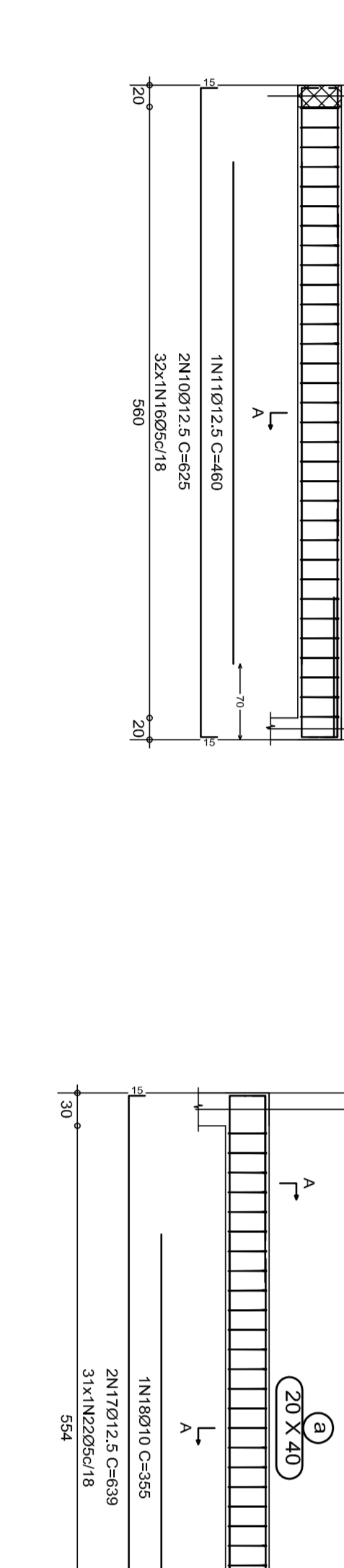
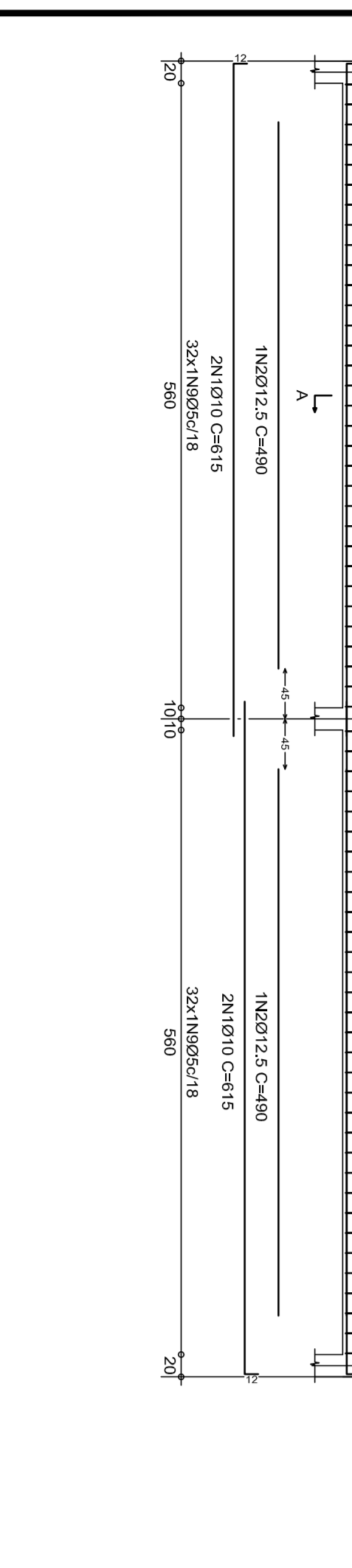
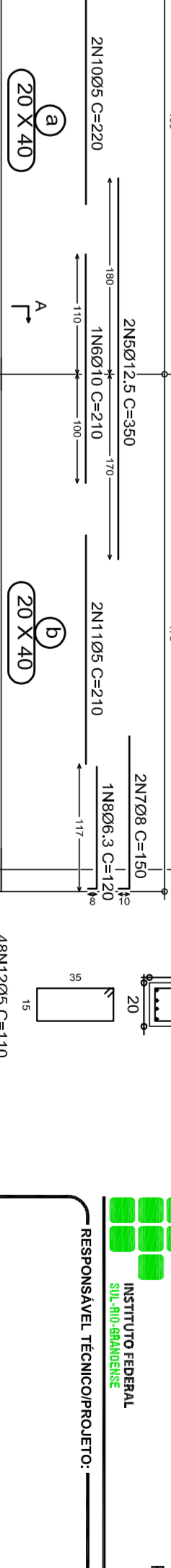
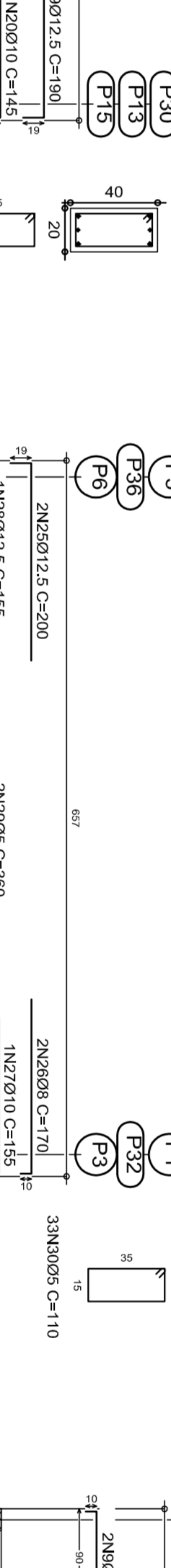
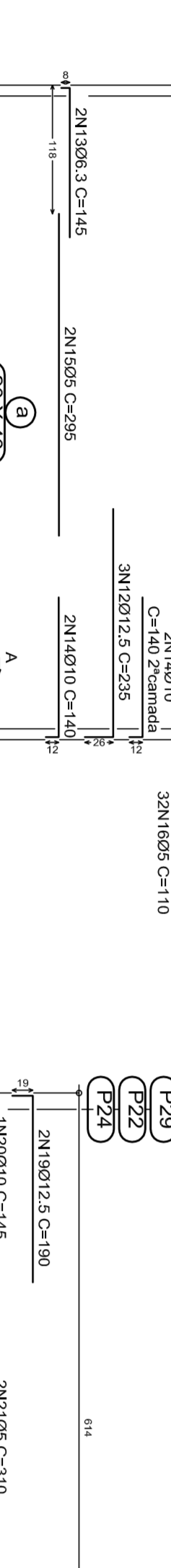
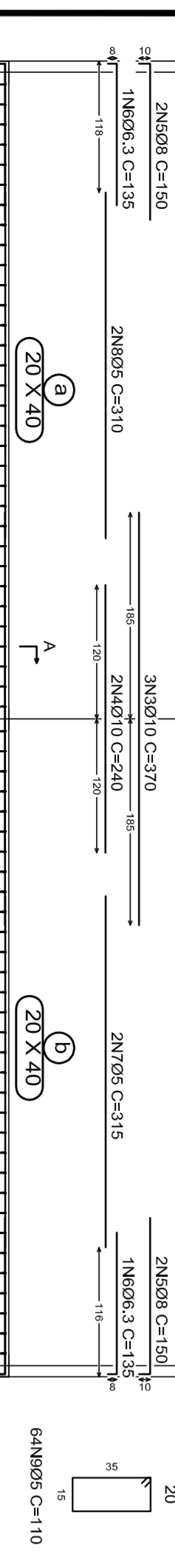
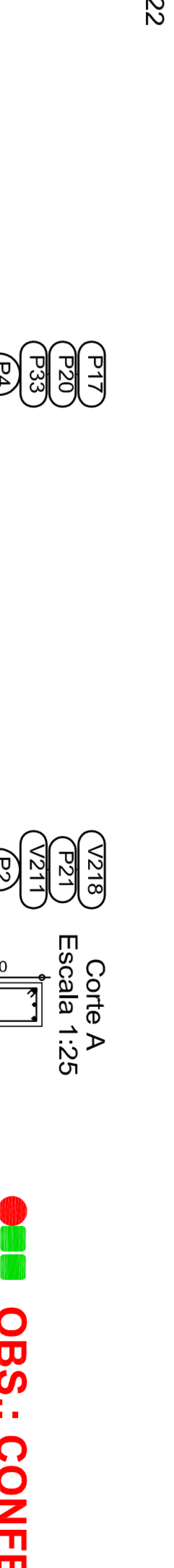
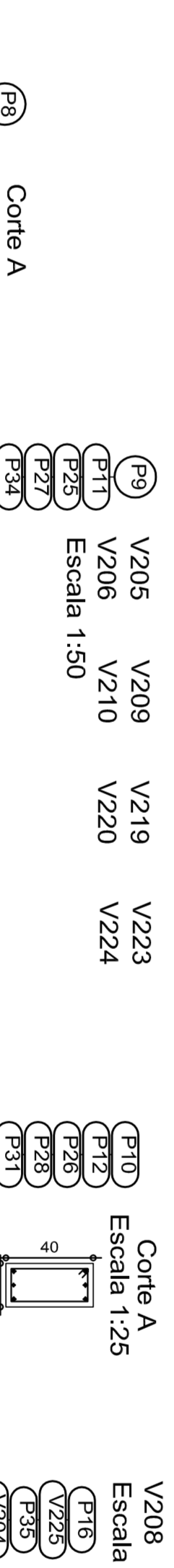
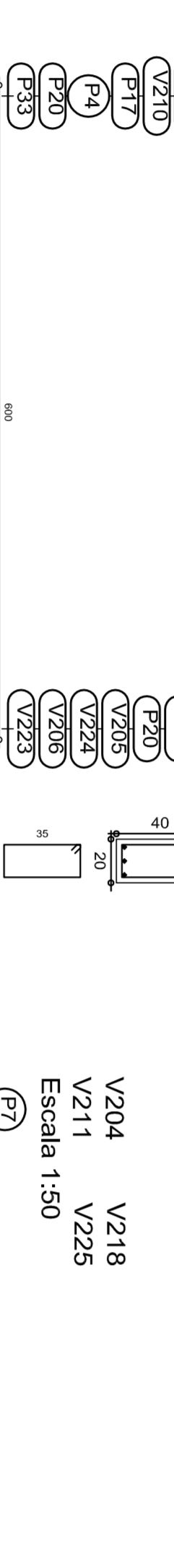
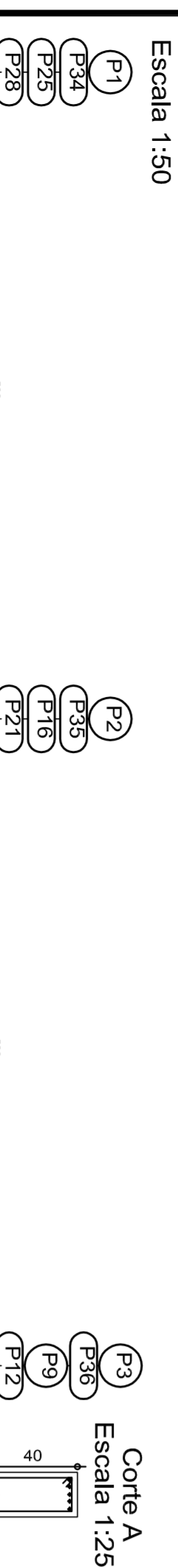


Referido Ao	Comp. total (Projeto+10%)
Armadadura longitudinal inferior	8618,2
CA-50/A	2344

Forma 1 - Superfície total da sala	
Elemento	Forma (m ²) (Volume m ³) (Área m ²)
Lajes	645,63 54,45 2344
Viçag. Fundo	34,89 23,92 1486
Forma lateral	17,29 8,88 775
Forma (Sola, Formas)	131,20 8,88 6912
Forma (por m ²)	67,25 6,912 4612
Forma (por m ²)	126,7 6,724 8542



Referido Ao	Comp. total (Projeto+10%)
CA-50/A	861,3
Viçag.	38,8
Forma lateral	397,2
Forma (Sola, Formas)	522,5
Forma (por m ²)	541,0
Forma (por m ²)	529,1
TOTAL	1448



OBS.: CONFERIR MEDIDAS EM OBRA

CAMPUS BAGE - BLOCO SALAS DE AULA

PROJETO ESTRUTURAL

FORMAS E ARMADURAS DAS VIGAS E LAJES DE TORÇO

PROJETO: []

DATA: []

ESCALA: []

BRANCA: []